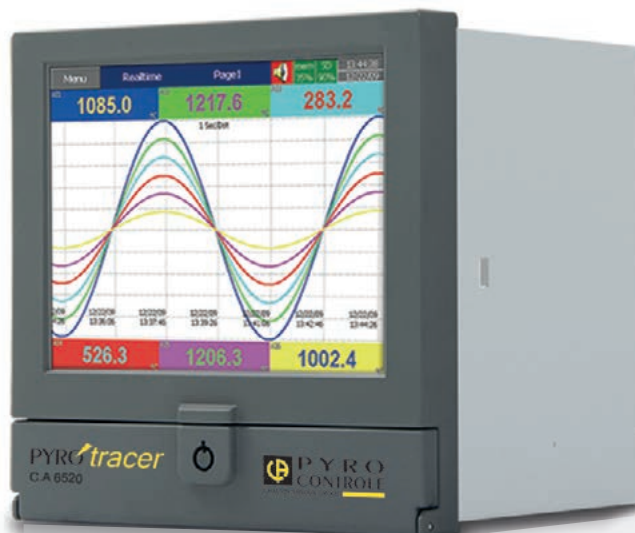


**PYRO** *tracer*  
C.A 6500 RANGE



*Measure up*



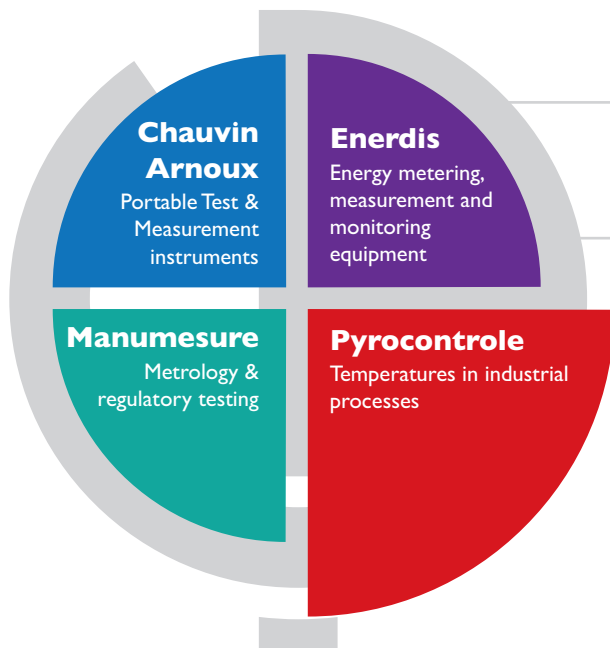
# PYROCONTROLE, a CHAUVIN ARNOUX GROUP company

Founded in Pars, France, in 1893, **Chauvin Arnoux** has succeeded over the centuries in developing its expertise in the design, manufacture and commercialization of measuring instruments for professionals.

From portable instrumentation to fixed electrical equipment and energy performance solutions, and from mastery of the whole thermal process chain to industrial metrology, the **Chauvin Arnoux** Group's offering covers every customer requirement, whatever the sector involved (electrical contractors, industry, government authorities, etc.).

## A few figures

- 10 subsidiaries spread across the world
- 900 staff
- 7 production sites
- 6 R&D departments worldwide
- 11% of revenues invested in R&D



## 4 FRENCH COMPANIES

promoting the product and service offering

## PYROCONTROLE

For all thermal process industries, **PYROCONTROLE** designs **high-accuracy sensors** for severe environments and solutions adapted to meet their temperature measurement and control requirements.

A **wide range of sensors** and industrial process expertise built up over many years make **PYROCONTROLE** the ideal partner for the industries such as the nuclear sector, petrochemicals, glass-making, metallurgy, etc.

## Thermal equipment offering

### Sensors

- Tailored temperature sensors for process industries from -268°C to + 1,800 °C
- 1,500 standard sensor references

### Instrumentation

- Temperature and power controllers
- Signal processing

### Heating elements

- Standard and tailored

### Supervision

- Human-Machine Interfaces
- Recorders

### Metrology

- COFRAC-accredited calibration laboratory
- Design of reference-standard sensors

**PYRO**tracer

The C.A 6500 range records, displays and monitors all your data for on-site or remote supervision



## Main advantages

### EASY-TO-READ, INTUITIVE INTERFACE

- > Customizable LED touch screen for quick commands and easier reading

### MULTIPLE POSSIBILITIES

- > 3 to 72 recording channels, with the possibility of 48 external channels

### SECURE & FAST

- > Secure data
- > 100 ms acquisition interval

### OPEN & COMMUNICATING

- > Ethernet as standard
- > Modbus master, web server

### ADVANCED FUNCTIONS

- > Pulse-counting input
- > Math & Logic
- > Batch management
- > FDA 21 CFR part11
- > Customizable screens
- > Multilingual: 19 languages

### COMPACT, RUGGED DESIGN

- > IP65
- > Reduced depth of casing

### ▶ A complete, secure range of recorders

The **PYROtracer C.A 6500** range is a series of new-generation paperless data recorders benefiting from the latest technological developments and an extra-rugged design.

Fast sampling, accuracy, data security, simple configuration, easy data processing and networking capabilities: a set of features which will allow you to make optimum use of your **PYROtracer**.

With its 2 recorders, the **C.A 6500** range meets every requirement. It offers extensive recording capacity on 3 to 72 channels (including 48 external channels) with an acquisition interval of 100 ms per channel for the most demanding applications.

### ▶ Reduced operating costs

The **C.A 6500** range allows you to choose the recorder which is the best match for your requirements, the standard **C.A 6510** model or the more powerful **C.A 6520**, while staying within your budget.

Their 144x144 format and reduced depth will help you make savings during integration.

### ▶ Modulatable solution

The **C.A 6500** Series also offers considerable flexibility thanks to the external channel I/O modules.

These add-ons enable you to increase the **C.A 6510**'s control capacity with an extra 24 channels and boost the **C.A 6520**'s capacity by 48 channels.

### ▶ Customizable interface

With the Panel STUDIO software, users can recreate their process. The customized screens enable you to view all or part of your installation on the screen of your **C.A 6500**.

# C.A 6500 range: a solution for each requirement!

The powerful, high-performance C.A 6500 family offers the possibility of comprehensive data acquisition, an exceptional display and high-security data storage.

## The Range

The **PYROtracer C.A 6500** range comprises 2 recorder models, from the simplest to the most sophisticated, to suit every application

<b>Advantage</b>	Price/ performance ratio	Its power
<b>Channels</b>	3 or 6 Upgradable to 24	24 Upgradable to 48
<b>Format</b>	144x144	144x144
<b>Screen</b>	4.3"	5.6"

### Portable version

A portable version of the **PYROtracer** is also available which is easy to transport in your workshops or on outdoor sites.



## Main application sectors

- ▶ Heat treatment
- ▶ Pharmacy
- ▶ Agri-food
- ▶ Health
- ▶ Laboratory
- ▶ Water treatment
- ▶ Chemicals



## Data management & display

- Configuration and processing of the data history with **OBSERVER**
  - ▶ Offline or online configuration of the **C.A 6500** recorders.
  - ▶ Reading of encrypted data, display and analysis on PC via the recorder using the RJ45 connector or via the Ethernet network.

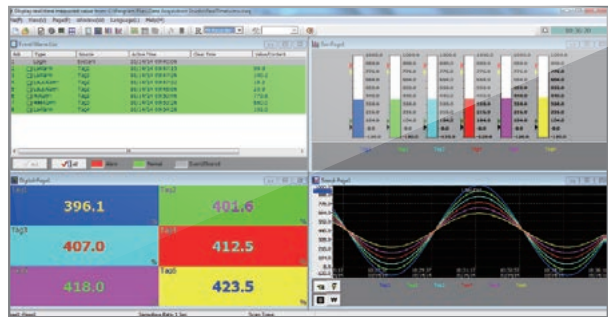
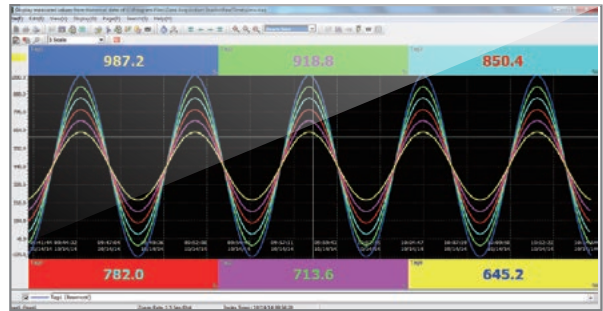
The data can be exported in CSV format.

- Real-time display and monitoring with **PYROdaq\***
  - ▶ Real-time display for clear, precise data analysis.
  - ▶ Display in history mode for more detailed study.

Possibility of displaying the data from several recorders on a single PC.

\*available as an option

- Constantly keep an eye on your process with the **Web server**
  - ▶ With the built-in web server, it is possible to view the curves and data from the **C.A 6500** recorders anywhere in the world.



## Data security

- Compliant with 21 CFR Part 11

The **C.A 6500 range** follows the FDA (US Food & Drug Administration) recommendations concerning the 21 CFR Part 11 standard for electronic recording and signatures (FA1 version). Password expiry is managed by this FA1 version.

- Reliability - Security key

To prevent any unauthorized access to the memory card, the **C.A 6500** models are equipped with a mechanical security key on their front panel.

- Batch management and traceability

The batch management option can be used to record the data from the Batch processes. Each batch number is unique and is completed by 3 free comment fields for the user.

All the information can be entered directly on screen, by means of a keyboard or a barcode reader.



## Practical, intuitive user interface

### ■ Customizable screen

Simplify the "operator" interface!  
The Panel Studio software can be used to represent your production processes on the screens of your recorders. (option)

- ▶ Creation of block diagrams of your installations
- ▶ Access to a library of ready-to-use objects and images

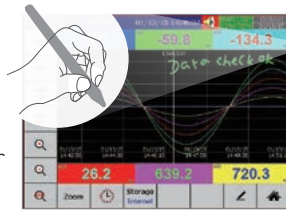


### ■ Writing directly on screen

A great way to avoid losing your notes!  
Use a stylus to write directly on the recorder's screen. Your notes will be archived in the internal memory next to the points you wish to highlight.

### ■ Touch screen

The **PYROtracer** is equipped with a practical touch screen for quick commands.



### ■ HMI functionality

Depending on the application, the **C.A 6500** may be used as a low-cost Human-Machine Interface.



*Example of interface scenario: When connected to I/O modules, the PYROtracer provides direct on-screen access to the remote I/S modules.*



## Communicating recorder

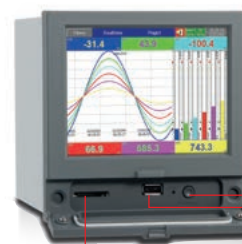
### ■ Multiple external connections

With its USB ports, the **C.A 6500** range has several inputs for connecting peripheral devices.

- ▶ keyboard,
- ▶ USB keys
- ▶ mouse
- ▶ barcode reader
- ▶ printer

### ■ Ethernet communication

The **PYROtracer** offers Ethernet communication as a standard feature. It can handle the FTP, TCP/IP and http protocols, so it is easy to integrate into your local area networks.



SD card

On/Off button

USB



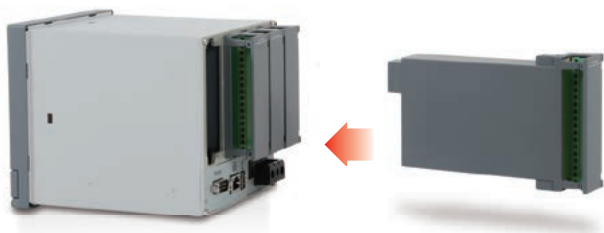
Communication  
RS485  
SubD

USB port

Power supply

Ethernet  
RJ45

## Upgradable recorder

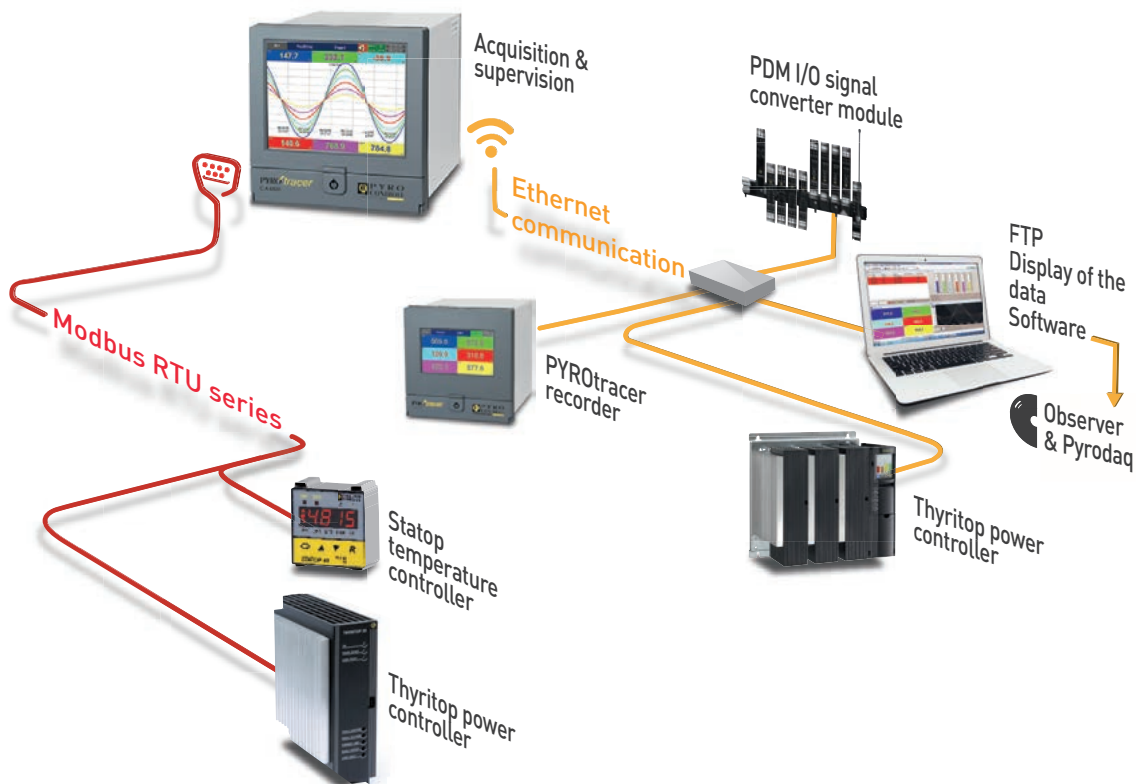


■ Extension by "PLUG & PLAY"

Adding inputs/outputs has never been so simple! The input/output modules are "Plug and Play" add-ons recognized automatically by the recorder. The content of the slots can be viewed directly on the set-up screen.

## Application: global supervision of an installation

### PYROtracer Modbus RTU series



■ Network architecture

With the Modbus master option **the C.A 6500 range** is open to the outside world. Slave peripheral devices can be connected and their data can be recorded on the C.A 6500, thus taking advantage of the recorder's features (secure data storage, remote viewing, etc.) These peripherals behave like external inputs. Up to 48 external inputs can be managed, depending on the recorder used.

It is also possible to control these peripherals via the touch screens of your C.A 6500 recorders.

**Examples of use:** *changing the setpoint of a controller, acknowledging alarms remotely. On the ETHERNET network and with a serial link, the C.A 6500 range can act as master or slave according to your requirements.*

In this example: the C.A 6500 is the MODBUS RTU link master and the ETHERNET network master.



**C.A 6510**

## Inputs/Outputs

Number of universal inputs
Number of external inputs
Types of inputs
Digital inputs
Pulse inputs
Relay outputs
Acquisition interval

3-6
24
> Thermocouples: J, K, T, E, B, R, S, N, L, U, P, W5, W3, LR, A1, A2, A3, M > RTDs: Pt50, Pt100, Pt200, Pt500, JPt50, JPt100, JPt200, JPt500, Pt1000 (α=0.00385), Pt50, Pt100(α=0.00391) > Cu10 (α=0.00427), Cu50, Cu100 (α=0.00427, α=0.00428), Ni100, Ni200, Ni500, Ni1000 (α=0.00428) > Universal: mA, V, mV
Up to 6
Up to 6
Up to 6
Down to 100 ms per channel

## Advanced functions

Math channels
Customizable screens + Panel Studio software
Batch management
FDA 21CFR Part11

15
option
option
option

## Display

Number of traces per page
Number of pages

6
8

## Screen

Screen (extra-bright)
Resolution
Backlighting MTBF at 25°C (Max. brightness)
Backlighting
Screen saver

4.3" colour TFT touch screen
480x272
30,000 hours
LEDs with adjustable brightness
1 to 60 minutes

## Memory

Processor
Internal Flash memory
RAM
SD Card slot
USB connectors

ARM Cortex-A8, 1 GHz
256 MB
256 MB
yes
x2, one on front panel, one on rear panel

## Communication interfaces

Sending of email
Ethernet
RS232 and RS422/485
Master communication
WEB server

yes
Modbus TCP/IP
option
option
yes

## Software: configuration & display

OBSERVER PC Historical Viewer + Configuration
PYRODAQ real-time display

yes
option

## Mechanical specifications

Dimensions (LxHxD)
Mounting depth
Panel cutout (LxH)
Portable version

144x144x189 mm
171 mm
137x137 mm
option

## Power supply & environment

Power supply
Ingress protection
Operating temperature
Storage temperature
Certifications

11-36 VDC or 90-250 VAC
IP65 front panel, IP20 rear panel
0°C to 50°C
-30°C to 70°C
CE, cULus, RoHS

## Other parameters

Operating system
Languages
On/Off button
Calibration

Windows CE version WINCE 6.0
19 integrated languages
yes
On-site calibration possible





## C.A 6520

### Inputs/Outputs

Number of universal inputs	3-6-12-18-24
Number of external inputs	48
Types of inputs	<ul style="list-style-type: none"> <li>&gt; Thermocouples: J, K, T, E, B, R, S, N, L, U, P, W5, W3, LR, A1, A2, A3, M</li> <li>&gt; RTDs: Pt50, Pt100, Pt200, Pt500, JPt50, JPt100, JPt200, JPt500, Pt1000 (<math>\alpha=0,00385</math>), Pt50, Pt100(<math>\alpha=0.00391</math>)</li> <li>&gt; Cu10 (<math>\alpha=0.00427</math>), Cu50, Cu100 (<math>\alpha=0.00427</math>, <math>\alpha=0.00428</math>), Ni100, Ni200, Ni500, Ni1000 (<math>\alpha=0.00428</math>)</li> <li>&gt; Universal: mA, V, mV</li> </ul>
Digital inputs	Up to 12
Pulse inputs	Up to 12
Relay outputs	Up to 12
Acquisition interval	Down to 100 ms per channel

### Advanced functions

Math channels	40
Customizable screens + Panel Studio software	option
Batch management	option
FDA 21CFR Part11	option

### Display

Number of traces per page	6
Number of pages	20

### Screen

Screen (extra-bright)	5.6" colour TFT touch screen
Resolution	640x480
Backlighting MTBF at 25°C (Max. brightness)	30,000 hours
Backlighting	LEDs with adjustable brightness
Screen saver	1 to 60 minutes

### Memory

Processor	ARM Cortex-A8, 1 GHz
Internal Flash memory	256 MB
RAM	256 MB
SD Card slot	yes
USB connectors	x2, one on front panel, one on rear panel

### Communication interfaces

Sending of email	yes
Ethernet	Modbus TCP/IP
RS232 and RS422/485	option
Master communication	option
WEB server	yes

### Software: configuration & display

OBSERVER PC Historical Viewer + Configuration	yes
PYRODAQ real-time display	option

### Mechanical specifications

Dimensions (lxHxD)	144x144x189 mm
Mounting depth	171 mm
Panel cutout (lxH)	137x137 mm
Portable version	option

### Power supply & environment

Power supply	11-36 VDC or 90-250 VAC
Ingress protection	IP65 front panel, IP20 rear panel
Operating temperature	0°C to 50°C
Storage temperature	-30°C to 70°C
Certifications	CE, cULus, RoHS

### Other parameters

Operating system	Windows CE version WINCE 6.0
Languages	19 integrated languages
On/Off button	yes
Calibration	On-site calibration possible

## Codification

Products No. of channels Inputs / Outputs

Products	No. of channels	Inputs / Outputs
C.A 6510	3	0   Not supplied
		6   3 relays + 3 DI
	6	0   Not supplied
		1   6 relays
		3   6 DI
		6   3 relays + 3 DI
7   6 relays + 6 DI		
C.A 6520	3	0   Not supplied
		6   3 relays + 3 DI
		C   3 relays + 3 DI + 6 AO
	6	0   Not supplied
		1   6 relays
		3   6 DI
		5   6 AO
		6   3 relays + 3 DI
		7   6 relays + 6 DI
		A   6 relays + 6 AO
		B   6 DI + 6 AO
	C   3 relays + 3 DI + 6 AO	
	12	0   Not supplied
		1   6 relays
		2   12 Relays
		3   6 DI
		4   12 DI
		5   6 AO
		6   3 relays + 3 DI
		7   6 relays + 6 DI
		8   9 Relays + 3 DI
		9   3 Relays + 9 DI
		A   6 Relays + 6 AO
		B   6 DI + 6 AO
	C   3 relays + 3 DI + 6 AO	
	18	0   Not supplied
		1   6 relays
		3   6 DI
		6   3 relays + 3 DI
	24	0   Not supplied



### Power supply

- A 90-250V 50/60Hz
- B 11-36 Vdc

### Communication

- 0 Standard Ethernet
- 1 Ethernet + RS232
- 2 Ethernet + RS422/485

### Advanced functions

- 0 Standard
- 1 FA1 Math functions - Modbus Master - Batch - 21 CFR Part 11
- 2 FA2 Customized screen - Panel Studio software
- 3 FAI3 = FA1 + FA2

### Display software

- 0 Historical Viewer & Configuration software - Observer
- 1 Data Acquisition Studio software (Real time Viewer-Pyrodaq)

### Mounting

- 0 Flush-mounted without On/Off switch
- 1 Flush-mounted with On/Off switch
- 2 Portable + UL & CSA cable
- 3 Portable + VDE cable

### Archiving

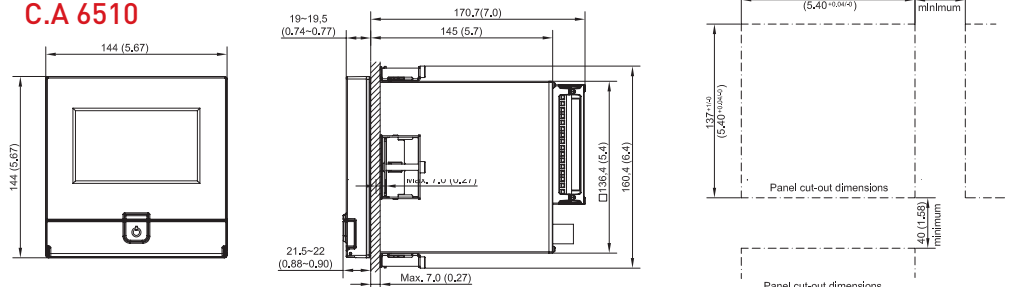
- 0 None
- 1 16 GB SD Card
- 2 32 GB SD Card
- 3 16 GB USB key
- 4 32 GB USB key

### Calibration certificate

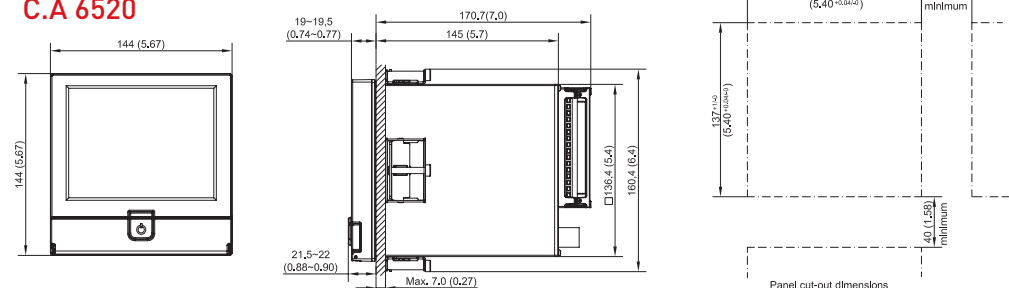
- 0 None
- 1 Calibration certificate

## Dimensions

### C.A 6510



### C.A 6520



### Example of order:

C.A 6520, 12 channels, 12 relays, 11 to 36 VDC power supply, communication: Ethernet+RS422/485, advanced functions 1, Pyrodaq software, mounting: flush-mounted with switch, 32 GB USB key, with a calibration certificate.

► order:

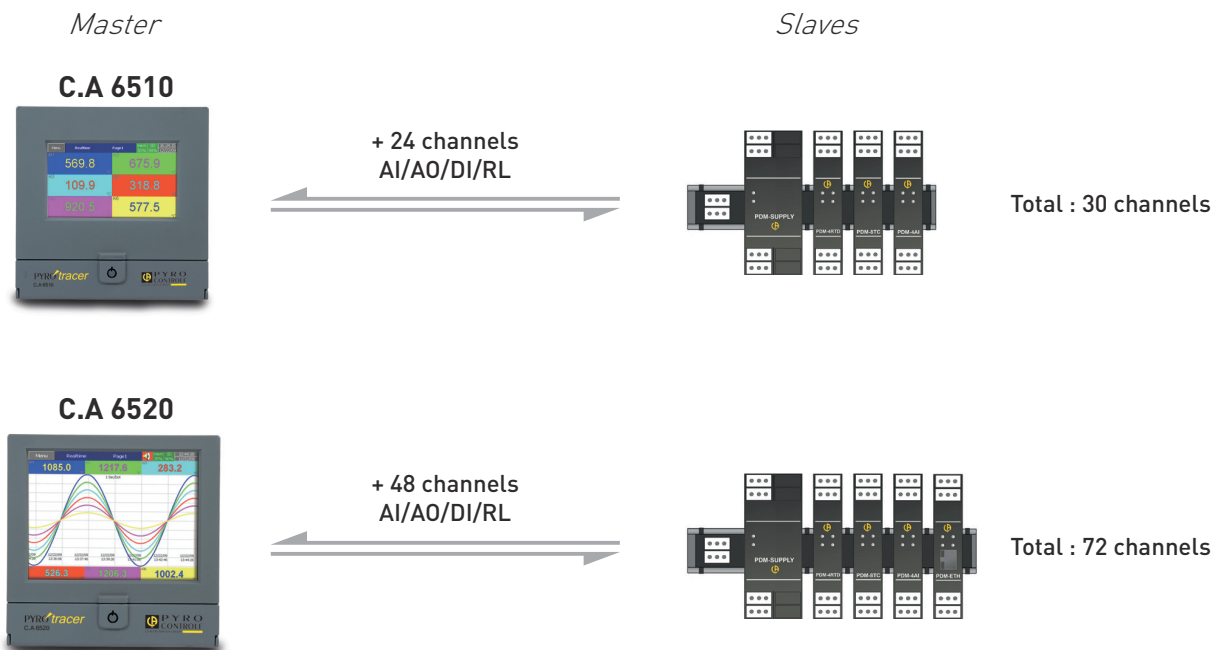
C.A 6520 -12-2-B-2-1-1-1-4-1

# Channel extensions

Taking advantage of the Master/Slave principle, increase the number of channels on your **C.A 6500** very simply with the PDM range of remote I/O modules from Pyrocontrol.

■ **ADVANTAGES** of the combination

- ▶ Excellent price/performance ratio
- ▶ Modular
- ▶ A single solution for the whole site
- ▶ Compact design



Connection: RS485 MODBUS

## PDM I/O modules

Choose your PDM I/O models

Applications	Modules	Inputs / Outputs
Temperature	PDM- 4RTD	4 RTD inputs
	PDM- 4TC	4 thermocouple inputs
	PDM- 8TC	8 thermocouple inputs
Analogue	PDM- 4AI	4 configurable analogue inputs
	PDM- 8AI	8 configurable analogue inputs
	PDM- 3AO	3 configurable outputs
Digital	PDM- 5RO	5 relays
	PDM- 10DI	10 logic inputs
	PDM- 10DO	10 logic outputs
	PDM- DIO	6 logic inputs / relays

## Documentation

Find all the technical specifications and references of the Pyrocontrol PDM I/O Modules in the specific "PDM" catalogue.



# 10 subsidiaries worldwide

## GERMANY

Chauvin Arnoux GmbH  
Ohmstraße 1  
77694 KEHL / RHEIN  
Tel.: +49 07851 99 26-0  
Fax: +49 07851 99 26-60  
info@chauvin-arnoux.de  
www.chauvin-arnoux.de

## AUSTRIA

Chauvin Arnoux Ges.m.b.H  
Slamastrasse 29/2/4  
1230 WIEN  
Tel.: +43 1 61 61 9 61  
Fax: +43 1 61 61 9 61-61  
vie-office@chauvin-arnoux.at  
www.chauvin-arnoux.at

## CHINA

Shanghai Pu-Jiang  
Enerdis Instruments Co. Ltd  
3 F, 3 rd Building  
N° 381 Xiang De Road  
200081 SHANGHAI  
Tél. : +86 21 65 21 51 96  
Fax : +86 21 65 21 61 07  
info@chauvin-arnoux.com.cn

## SPAIN

Chauvin Arnoux Ibérica SA  
C/ Roger de Flor N°293, 1a Planta  
08025 BARCELONA  
Tel.: +34 93 459 08 11  
Fax: +34 93 459 14 43  
comercial@chauvin-arnoux.es  
www.chauvin-arnoux.es

## ITALY

AMRA SpA  
Via S. Ambrogio, 23/25  
20050 MACHERIO (MI)  
Tel.: +39 039 245 75 45  
Fax: +39 039 481 561  
info@amra-chauvin-arnoux.it  
www.chauvin-arnoux.it

## MIDDLE EAST

Chauvin Arnoux Middle East  
PO Box 60-154  
1241 2020 JAL EL DIB  
(Beirut) - LEBANON  
Tel.: +961 1 890 425  
Fax: +961 1 890 424  
camie@chauvin-arnoux.com  
www.chauvin-arnoux.com

## UNITED KINGDOM

Chauvin Arnoux Ltd  
Unit 1 Nelson Ct, Flagship Sq  
Shaw Cross Business Pk, Dewsbury  
West Yorkshire - WF12 7TH  
Tel.: +44 1924 460 494  
Fax: +44 1924 455 328  
info@chauvin-arnoux.co.uk  
www.chauvin-arnoux.com

## SCANDINAVIA

CA Mätssystem AB  
Box 4501 - SE 18304 Täby -SWEDEN  
Tel.: +46 8 50 52 68 00  
Fax: +46 8 50 52 68 10  
info@camatsystem.com  
www.camatsystem.com

## SWITZERLAND

Chauvin Arnoux AG  
Moosacherstrasse 15  
8804 AU Zurich  
Tel.: +41 44 727 75 55  
Fax: +41 44 727 75 56  
info@chauvin-arnoux.ch  
www.chauvin-arnoux.ch

## USA

Chauvin Arnoux Inc  
d.b.a AEMC Instruments  
200 Foxborough Blvd.  
Foxborough - MA 02035  
Tel.: +1 (508) 698-2115  
Fax: +1 (508) 698-2118  
sales@aemc.com  
www.aemc.com

## Contact us:

PYROCONTROLE  
6 bis avenue du Docteur Schweitzer  
69881 MEYZIEU Cedex

[info@pyrocontrole.com](mailto:info@pyrocontrole.com)



+33 4 72 14 15 40

Ask for our other  
product catalogues

Visit PYROCONTROLE at [www.pyrocontrole.com](http://www.pyrocontrole.com)

