

## MX 675 - MX 670

## MX 655 - MX 650

## MX 355 - MX 350

# Clamp multimeters

### A solution and a clamp for each requirement:

- Electrical and electrotechnical maintenance
- Electrical installers
- Electricity distributors
- Tertiary sector



Measure up



# CLAMP MULTIMETERS

A range of 6 clamps to cover all your needs

Equipped with all the functions of a current clamp and a fully-featured multimeter, these models provide the measurement solutions required by every electrician.

MX 675 & MX 670



MX 655 & MX 650



MX 350 & MX 355



## MX 670 & MX 675

These CAT IV 600 V clamps offer total safety for working and testing on the parts of an installation not covered by all the protective systems.

The **AC/DC TRMS MX 675** can be used for continuous measurement of currents up to 1,400 ADC and 1,000 AAC.

The **AC TRMS MX 670** can clamp conductors up to 42 mm in diameter for currents up to 1,000 AAC.

## MX 650 & MX 655

The MX 655 and MX 650 are recommended for high voltages and currents (up to 1,000 A and 750 V), completed by a TRMS converter for AC signals (MX 655).

The **MX 655**, which uses the Hall effect for its measurements, can measure AC or DC currents. The **MX 650** can measure AC currents as it uses the principle of measurement via transformer.

## MX 350 & MX 355

These compact, ergonomic models are ideal for domestic and tertiary requirements, as well as small industries.

The **MX 355** is equipped with an automatic Zero DC function for measuring direct currents. This function can also be used to perform differential current, voltage and resistance measurements.

# Major advantages

The MX range of current clamps can cover a large number of applications thanks to their **clamping diameters** from **26 mm (MX 350) to 42 mm (MX 670)**.

- ▶ Like the other models, the MX 670 & MX 675 current clamps offer very broad measurement ranges, including **voltage measurements up to 1,000 VAC / 1,400 Vdc**.
- ▶ To improve measurement accuracy, the **MX 670 & MX 675** offer new features: **simultaneous current and voltage measurement**.
  - In this way, the 2 values are measured at the same moment in the same context.
  - The dual display enables you to view these results, which are both TRMS measurements.

## Ergonomic

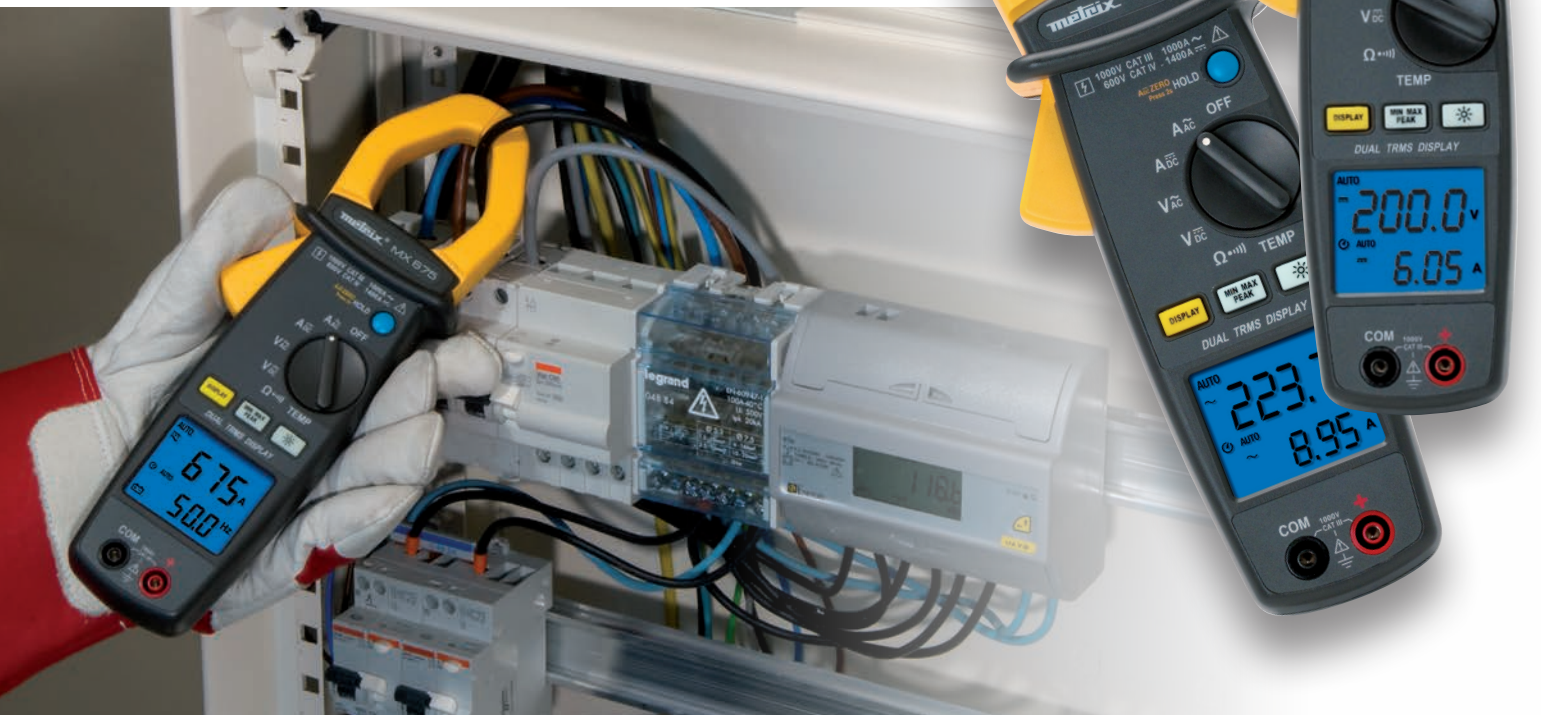
The **MX 670 & MX 675** can be used to measure the voltage and current simultaneously. Their dual display allows you to view these two measurements instantaneously.

The ergonomics of these clamps has been designed for particularly easy user handling. Their switch provides clear, precise function selection. Due to the quality of the displays, they are very easy to read.

## Safety first!

To ensure user protection and product reliability, the whole range complies with the strictest standards in terms of safety (IEC 61010) and production quality.

The new **MX 670 & MX 675** clamps are ideal for use in **Category IV** environments (upstream of the disconnector, circuit-breakers, etc.).



# CLAMP MULTIMETERS

- ▶ All the clamps are delivered with their accessories.  
Simply install the batteries supplied and the instrument is ready for measurement!



Technical specifications	MX 350	MX 355	MX 650	MX 655	MX 670	MX 675
Clamping diameter	26 mm	30 mm	36 mm	40 mm	42 mm	40 mm
Type of measurement	TRMS		AVG		TRMS	
<b>CURRENT</b>						
DC	-	0.10 A to 400.0 A	-	0.1 A to 1000 A	-	0.05 A to 1400 A
AC	0.05 A to 400.0 A		0.05 A to 1000 A		0.05 A to 1,000 A	
<b>VOLTAGE</b>						
DC range	0.03 V to 600.0 V		0.2 V to 1000 V		0.2 V to 1,400 V	
AC range	0.05 V to 600.0 V		0.5 V to 750 V	0.5 V to 750 V	0.5 V to 1,000 V	
<b>RESISTANCE</b>						
range	0.2 Ω to 599.9 Ω		0.2 Ω to 3,999 Ω		0.3 Ω to 9,999 Ω	
Diode	-		0.6 mA / ≤ 3.3 V	≤ 1.7 mA / ≤ 6 V	-	
Audible continuity	YES		YES		YES	
<b>FREQUENCY</b>						
Current	20 Hz to 10 kHz	-	20 Hz to 10 kHz		0.2 Hz to 9,999 Hz	
Voltage	10 Hz to 100 kHz	-	10 Hz to 10 kHz		0.2 Hz to 9,999 Hz	
<b>TEMPERATURE WITH K THERMOCOUPLE</b>						
°C	-		-		-40 °C to +999.5 °C +1,000 °C to +1,200 °C	
°F	-		-		-40 °F to +2,192 °F	
<b>Other functions</b>						
Display	6,000 counts		4,000 counts 42-segment bargraph		Double 10,000-count display with blue backlighting	
Functions	HOLD	HOLD, Δ Zero Peak	HOLD, Peak, MAX/MIN, Δ Rel, Range	HOLD, Peak, MAX/MIN Δ Rel	HOLD, MIN, MAX, Peak, Δ Zero DC	
Electrical safety: IEC 61010-1. IEC 61010-2-032. IEC 61010-2-033	CAT III 600 V		CAT III 600 V		CAT IV 600 V CAT III 1,000 V	
Dimensions / weight	199 x 75 x 36 mm / 243 g		246 x 93 x 43 mm / 400 g		272 x 80 x 43 mm / 480 g	

## References to order

- ▶ **MX0350Z:**  
**MX0355Z:**  
Clamp multimeter delivered with 2 x 1.5 V AAA alkaline batteries, 1 user's manual in 5 languages, 1 soft carrying bag, 1 set of measurement cables with test probes.
- ▶ **MX0650-Z:**  
**MX0655-Z:**  
Clamp multimeter delivered with 1 x 9 V battery, 1 user's manual in 5 languages, 1 soft carrying bag, 1 set of measurement cables with test probes.
- ▶ **MX0670:**  
**MX0675:**  
Clamp multimeter delivered with 1 x 9 V battery, 1 user's manual in 5 languages, 1 soft carrying bag, 1 set of measurement cables with test probes and 1 K thermocouple sensor.

**INTERNATIONAL**  
**Chauvin Arnoux**  
12-16, rue Sarah Bernhardt  
92600 Asnières-sur-Seine  
Tél : +33 1 44 85 44 38  
export@chauvin-arnoux.fr  
www.chauvin-arnoux.com

**UNITED KINGDOM**  
**Chauvin Arnoux LTD**  
Unit 1 Nelson Ct, Flagship Sq, Shaw  
Cross Business Pk  
Dewsbury, West Yorkshire - WF12 7TH  
Tel: +44 1924 460 494  
info@chauvin-arnoux.co.uk  
www.chauvin-arnoux.com

**MIDDLE EAST**  
**Chauvin Arnoux Middle East**  
PO Box 60-154  
1241 2020 Beirut  
Tél. : +961 1 890 425  
camie@chauvin-arnoux.com  
www.chauvin-arnoux.com